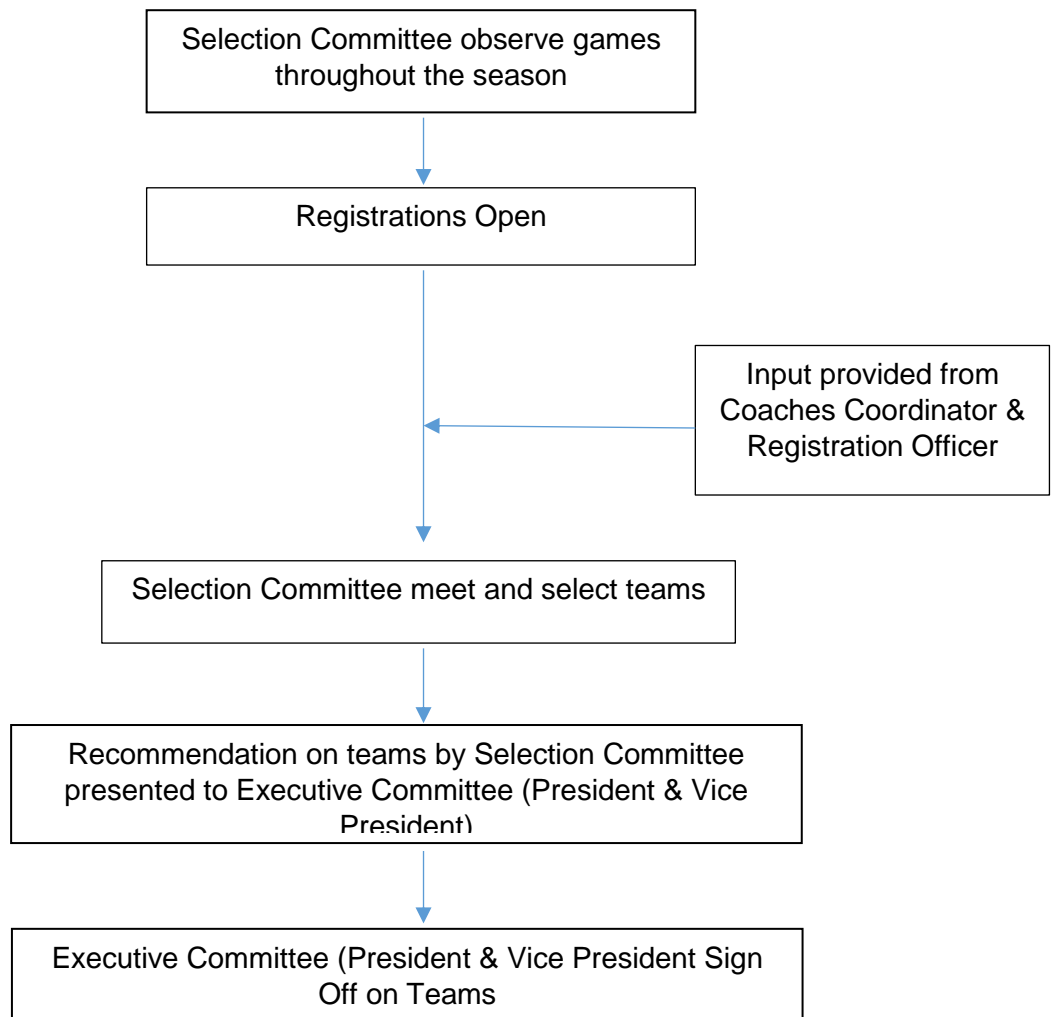


Selection Philosophy – WMNC

The aim of The Waverley Meadows Netball Club in team selection is to form playing groups that are balanced with similar ability across all positions.

The Club aims to ensure player grading and selection is conducted fairly, equitably and in the best interest of both club and player.

Selection Process



Selection Criteria

Once registrations are received by the registration date (prior to the winter season), there is a range of factors that the selection committee will consider including, but not limited to:

- Footwork
- Ball handling

- Attacking skills
- Defending skills
- Mid-court skills
- Speed
- Fitness
- Agility
- Discipline
- Teamwork
- Positive attitude
- Development potential
- All court positions are covered

Under 11's

Under 11 teams are selected using non-competitive criteria. The priority therefore is to assist players to have fun, learn skills and develop confidence