

Waverley Netball Centre

Outdoor Netball Court Redevelopment

Jells Park, Wheelers Hill



We are pleased to advise you of a significant facility improvement project that will be undertaken in 2021 at Waverley Netball Centre on Jells Road.

Monash Council received \$2 million from the Victorian Government via Sport and Recreation Victoria, to upgrade the eight outdoor netball courts at Waverley Netball Centre.

This project will ensure the netball courts are fit for purpose and compliant with court run-offs, to ensure player safety and meet modern competition LED lighting standards.

In order to retain eight fully compliant netball courts, we have had to expand the overall court footprint. The site has many level constraints and the courts have been designed to expand to the west toward the playspace and Jells Road.

As a result the playspace has been reconfigured to a more linear orientation, however all existing play pieces have been retained.

Key features of the netball court redevelopment include:


- Full reconstruction of the existing eight outdoor netball courts
- All courts to be Netball Victoria compliant
- All courts to have competition level lighting
- Reconfigured playspace
- Improved accessibility for wheelchairs and prams from the car park across all netball courts and down to the playspace
- Additional court seating for netball users and general reserve users.

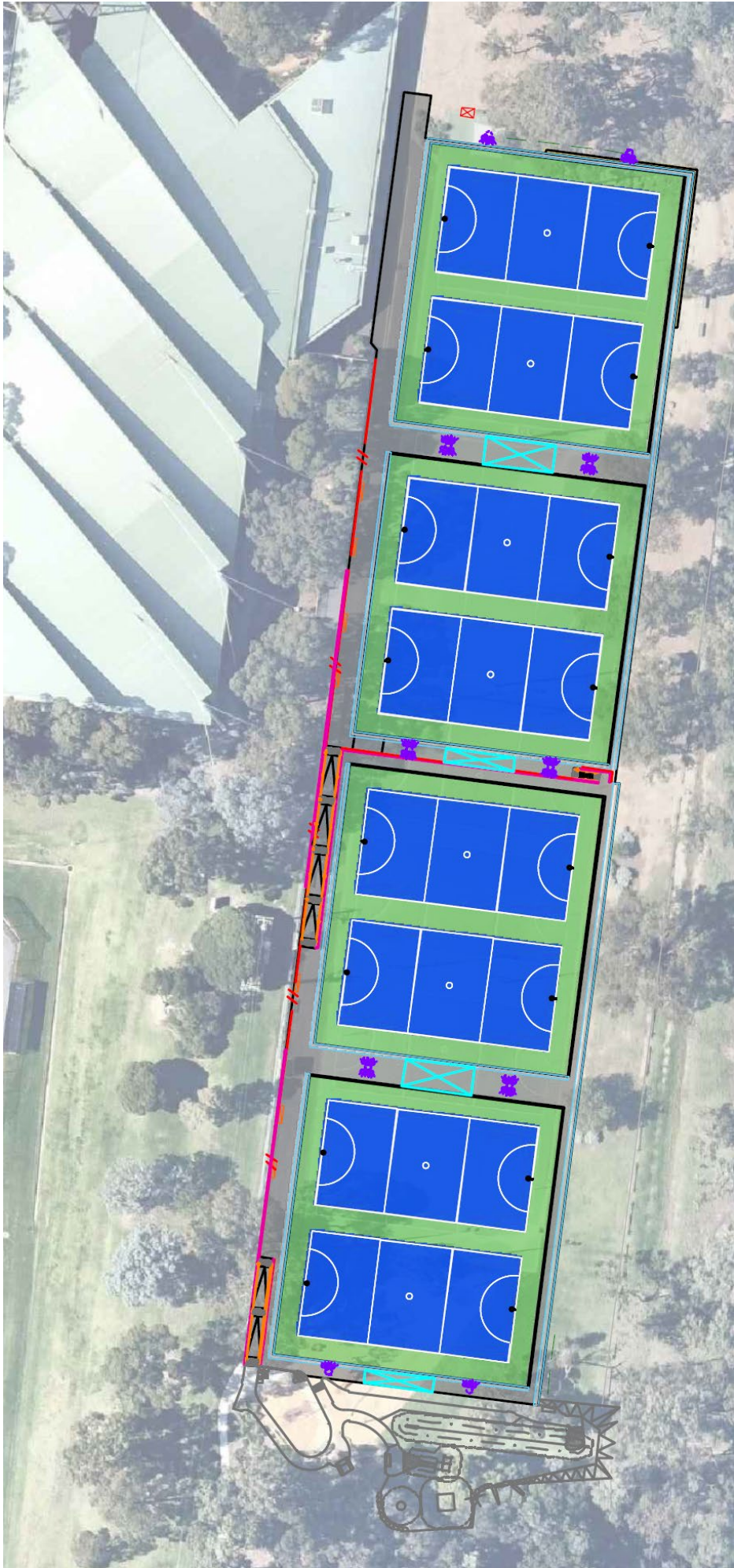
Construction is planned to begin early 2021 with all facilities being unavailable during the five month construction period. A further information flyer to be distributed to the community prior to works commencing on-site.

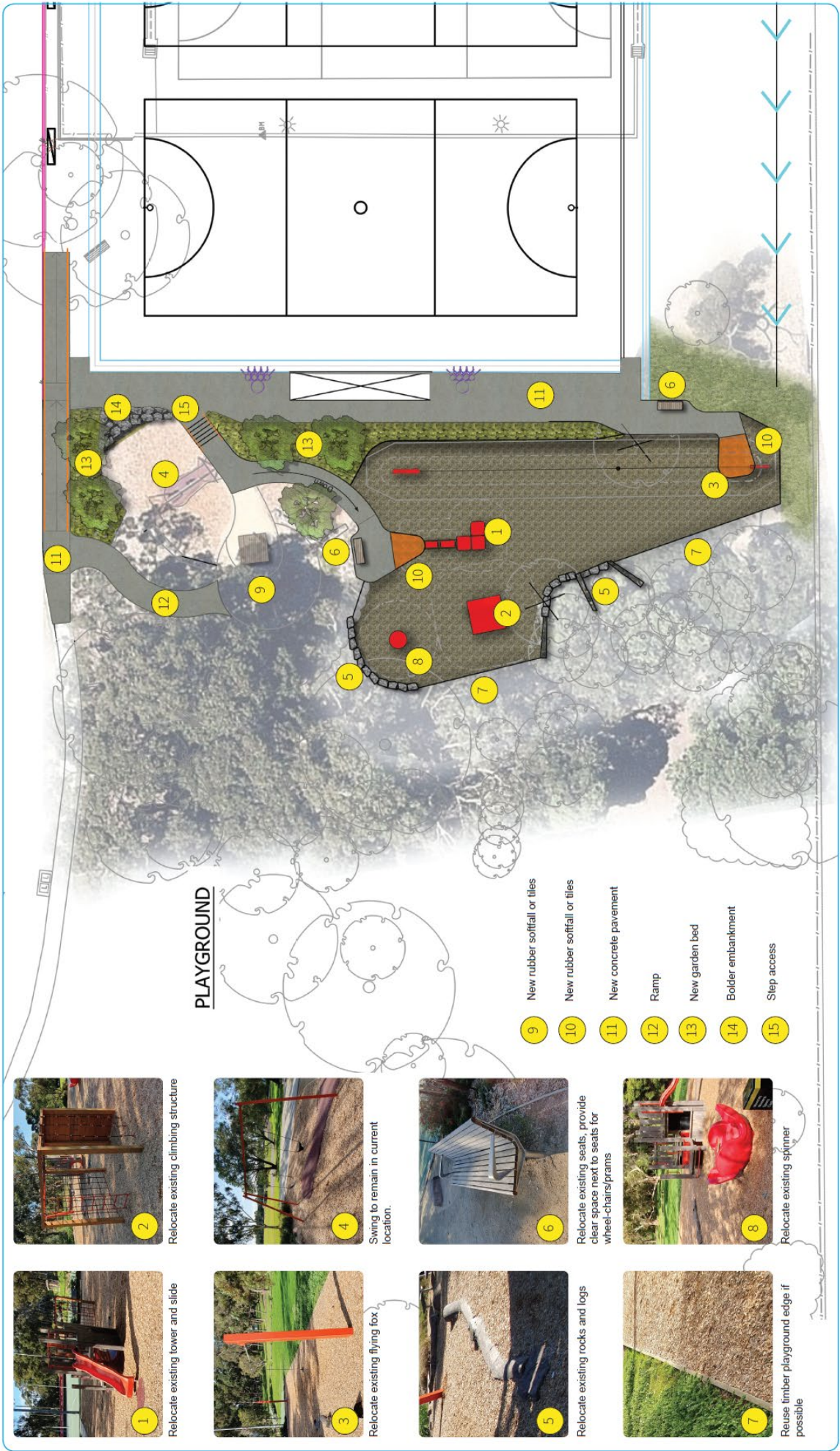
Please find the designs for the netball courts and newly reconfigured playspace attached.

For more information, please contact Aaron Higginbotham, Recreation Project Officer:

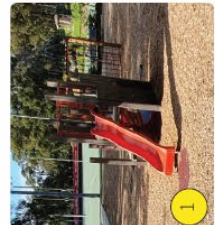
 Email: Aaron.Higginbotham@monash.vic.gov.au

 Phone: 9518 3005

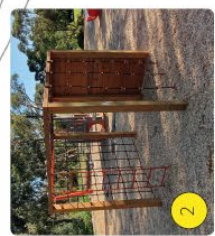




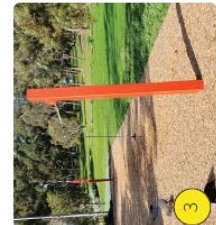
PLAYGROUND



1 Relocate existing tower and slide



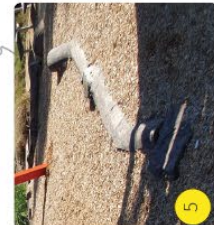
2 Relocate existing climbing structure



3 Relocate existing flying fox



4 Swing to remain in current location



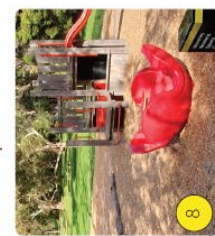
5 Relocate existing rocks and logs



6 Relocate existing seats, provide clear space next to seats for wheel-chairs/prams



7 Reuse timber playground edge if possible



8 Relocate existing spinner

- 9 New rubber soffit or tiles
- 10 New rubber soffit or tiles
- 11 New concrete pavement
- 12 Ramp
- 13 New garden bed
- 14 Boulder embankment
- 15 Step access